



K-12 Schools

INFRASTRUCTURE SOLUTIONS

Case Study

Dooly County School System

Energy Savings Performance Contract



\$3.7 million in projected energy and operating cost savings powered a proactive plan to improve existing facilities and support student success.

CHALLENGE

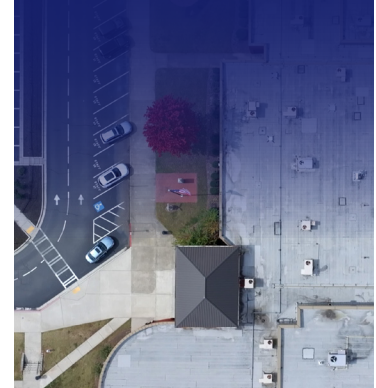
To outpace ongoing infrastructure needs and deliver improved spaces for students and teachers, Dooly County Schools required more flexibility in their capital plan for learning facility enhancements.

SOLUTION

ABM's custom energy savings project creates a projected \$3.7 million in energy and operating cost savings over 20 years. In addition, the project leverages ABM's unique ability to deliver both custom energy-saving solutions and facility services.

"This project helps our community capital achieve more for each school, to perpetuate success for every student."

— Dr. Craig Lockhart,
Superintendent of Dooly
County School System





Protecting Community Investments in Teachers and Technology

"Our students deserve state-of-the-art facilities," said Dr. Craig Lockhart, Superintendent of Dooly County School System.

ABM's project delivered energy savings and operational cost reductions from improved lighting, controls, and HVAC equipment for Dooly County's K-8 Academy and High School. The project increased space for the bus maintenance facility and upgraded student athletic facilities, including additional bathrooms, new lighting systems, and replacements or enhancements for the track, tennis courts, and football/soccer field.

The project also includes a new roof for the high school's gymnasium and a redesigned HVAC system to lengthen the useful life of the roof and provide climate control for the interior.

"Our technical and financial solutions help communities make sure the benefits of their investment are tangible for today's students," said Mark Hawkinson, President of ABM Technical Solutions.

BENEFITS

ABM's Energy Performance Contracting Program enables school districts and other entities, like local governments, institutions of higher learning, and federal agencies, to invest in critical infrastructure needs and achieve sustainability, security, and resilience goals. The program drives costs out of operating budgets and redirects savings to critical needs, helping fund improvements without upfront costs or tax increases.

Highlights of facility upgrades for Dooly County Schools include:

- LED lighting improvements and building controls
- HVAC equipment replacements and upgrades
- New roof for the High School gymnasium
- Athletic facility improvements including:
 - Synthetic football field turf
 - Running track resurfacing
 - New restroom facilities for baseball/softball fields
 - Tennis court replacement
 - Gymnasium seating repair
 - New lighting package

"We not only improve infrastructure through projects like this for our clients, but we also protect and preserve those investments for students, teachers and staff with ongoing maintenance and custodial services"

— Valerie Burd,
President of Education for ABM



ABM helped the Dooly County School System modernize its facility infrastructure and assets. Find out how we can make it possible for you by calling **866.624.1520** or visiting **ABM.com**.